



## **ENDO 3 DCA | DCI**

Drying and storage  
cabinets

---

[www.at-os.com](http://www.at-os.com)

**Your Health, our Technology**

# DC70 CABINETS

For drying of surgical  
instruments and respiratory  
circuits for anaesthesia

**AT-OS** makes two types of drying cabinets that differ according to the internal accessories that can be inserted:

- **DCA-70** allows rapid drying of anaesthesia breathing circuits and, in its combined version, drying of surgical instruments.

- **DCI-70** enables rapid drying of surgical instruments.

DC70 cabinets offer excellent drying performance, protecting instruments from dust and speeding up work, thus meeting the different needs of operators.

# DC70 line

## Drying cabinets



DCA-70



DCA-70  
COMBINED VERSION



DCI-70



### Stainless steel design

DC70s are used for drying surgical instruments and/or respiratory circuits for anaesthesia with controlled hot air. The cabinets are made of AISI 304 stainless steel (DIN 1.4301), with sound-absorbing and fireproof material, and a front panel of double tempered glass.



### Security system of door locking

A sensor on the door allows the cabinet to be opened at any time, to pause or reset the current cycle.



### Touch-pad keyboard with graphic display

Touch-screen control panel with colour LCD graphic display allowing the setting of drying parameters, such as temperature and time, according to the articles to be treated with acoustic warning in case of alarm and/or end of treatment.



### Alarm-check system

This system helps to understand why an alarm has occurred, before consulting the user manual. A screen appears on the display with the number and image of the alarm, as well as text explaining the possible causes.



## Setting temperature and time

Temperature and time can be set at each programme start for up to 120'. For tubes and anaesthesia balloons a programme with a temperature of 70°C (158°F) is recommended, for surgical instruments a temperature of up to 90°C (194°F) is reached inside. Once the drying programme is finished, it is recommended to leave the items inside the cabinet for another 15' so that they cool down.



## Ventilation and partial air recirculation with HEPA filter H14

The cabinet filters the air through 2 HEPA H14 filters. The first filter sucks in and filters air from outside the cabinet (ambient air), while the second filter sucks in air from inside the cabinet (recycle air). This allows considerable energy savings (approx. 50 %) and reduces heating times. In addition, there is an automatic alarm that signals a lack of pressure in the circuit and warns when the filters need to be changed.



## DCA-70 | DCA-70D

The DCA-70 is a rapid hot-air controlled drying cabinet for anaesthesia breathing circuits. By adding internal shelves for drying surgical instruments, the DCA-70 can be converted into a combined solution for simultaneous drying of surgical instruments and anaesthesia breathing circuits. Thanks to the technologies employed and the HEPA H14 filters, these cabinets are the ideal solution to speed up and reduce drying times and store instruments safely.

A DCA-70D version with through-door is also available to further optimise work.



Anaesthesia tube holders

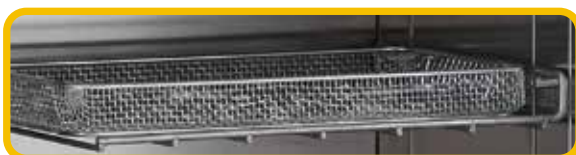


Balloons for anaesthesia

The cabinet has a capacity that allows it to accommodate **6 anaesthesia cassettes** with 6 positions each, for a total of **18 positions for tubes and 18 positions for balloons**. In the combined version, the cabinet can accommodate up to **18 positions for balloons** and house **5 DIN baskets**.

**+ SPACE**  
**+ INSTRUMENTS**

IS-70



IC-70



The DCA-70 is equipped with 5 shelves (IS-70 and IC-70) for a combined solution that also allows the drying of surgical instruments.

## ■ Technical features

	DCA-70	DCA-70D
Model code	18009118	18008302
Internal dimensions (WxDxH)	600x415x1430 mm (23.6"x16.3"x56.3")	600x415x1430 mm (23.6"x16.3"x56.3")
Indicative weight	180 Kg (397 lbs)	180 Kg (397 lbs)
Average air flow rate into cabinet	100 m <sup>3</sup> /h	100 m <sup>3</sup> /h
Internal pressure	725 Pa	725 Pa
Thermal dispersion (Maximum)	358947,37 J/h (341 BTU/h)	358947,37 J/h (341 BTU/h)
Internal volume	365 l (96.4 Gal)	365 l (96.4 Gal)
Communication ports	USB per PC	USB per PC
Noisiness	<60 (dBA)	<60 (dBA)
1x Touch control panel	✓	✓
Manual interlocked front door	✓	✓
Manual interlocked rear door	✗	✓
Forced-air ventilation	✓	✓
HEPA H14 filter	✓	✓

✓	Standard
●	On request
✗	Not available

## ■ External dimensions

### DCA-70DCA-70D

WxDxH: 700x480x1900 mm  
(27.6"x18.9"x74.8")



*The reference values are based on standard model.*

## DCI-70 - DCI-70D

The DCI-70 is a controlled hot-air rapid drying cabinet for surgical instruments. Equipped with 10 shelves, it has a capacity of up to 10 DIN 1/1 baskets. The shelves are completely removable to allow more height for the instruments to be dried.

A DCI-70D version with through-door is also available to further optimise work.



# HIGH CAPACITY OF DRYING

Thanks to the possibility of increased interior space, the cabinet guarantees an increase in the amount of tools to be dried and stored, thus speeding up the workload.

*Instruments perfectly dry  
in all their parts!*

- 10 removable shelves
- 10 DIN 1/1 baskets with the possibility of increasing the height by removing shelves.



## ■ Technical features

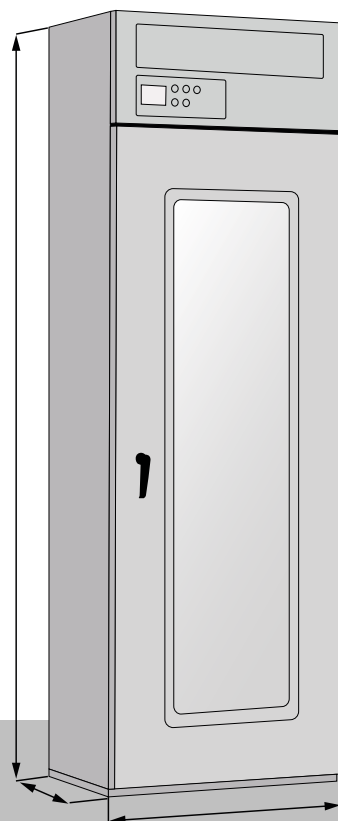
	DCI-70	DCI-70D
Model code	18009119	18008541
Internal dimensions (WxDxH)	600x415x1430 mm (23.6"x16.3"x56.3")	600x415x1430 mm (23.6"x16.3"x56.3")
Indicative weight	180 Kg (397 lbs)	180 Kg (397 lbs)
Average air flow rate into cabinet	100 m <sup>3</sup> /h	100 m <sup>3</sup> /h
Internal pressure	725 Pa	725 Pa
Thermal dispersion (Maximum)	358947,37 J/h (341 BTU/h)	358947,37 J/h (341 BTU/h)
Internal volume	365 l (96.4 Gal)	365 l (96.4 Gal)
Communication ports	USB per PC	USB per PC
Noisiness	<60 (dBA)	<60 (dBA)
1x Touch control panel	✓	✓
Manual interlocked front door	✓	✓
Manual interlocked rear door	✗	✓
Forced-air ventilation	✓	✓
HEPA H14 filter	✓	✓

✓	Standard
●	On request
✗	Not available

## ■ External dimensions

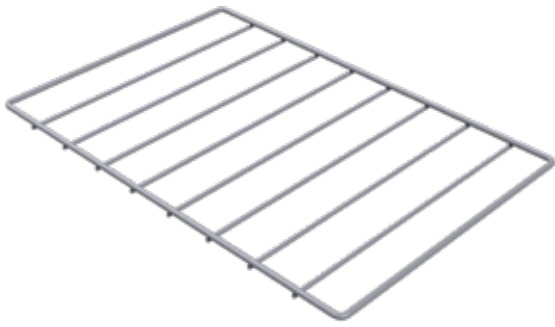
### DCI-70 | DCI-70D

WxDxH: 700x480x1900 mm  
(27.6"x18.9"x74.8")



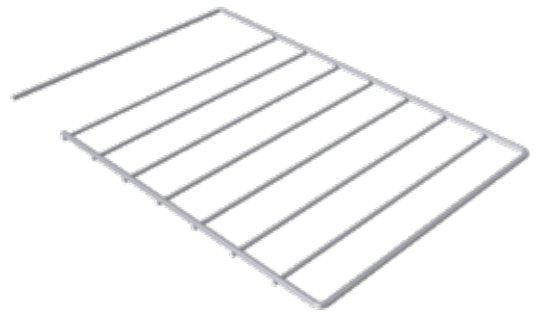
*The reference values are based on standard model.*

## DC-70 Inserts and shelves



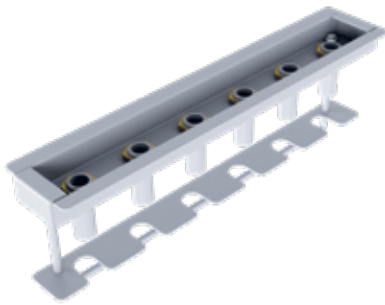
**Basket shelf  
IC-70**

A stainless steel shelf for placing DIN baskets.



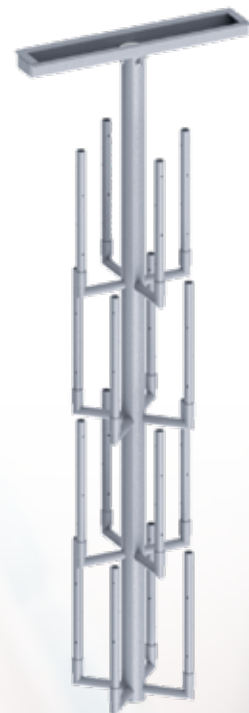
**Basket shelf  
combined IS-70**

A stainless steel shelf for a combined solution. With a dedicated space, it allows both anaesthesia breathing circuits and DIN baskets for surgical instruments to be positioned.



**Tube graft  
for anaesthesia**

A stainless steel hose holder for holding anaesthesia breathing circuit tubing. Capacity up to 6 tubes.



**Rotating balloons rack  
for anaesthesia**

Made of stainless steel, it allows 16 anaesthesia balloons to be hung and dried. Thanks to its rotating movement, the anaesthesia balloons can be inserted manually and easily onto the insert.



**Balloon graft  
for anaesthesia**

A stainless steel balloon holder to hold balloons for anaesthesia breathing circuits. Capacity up to 6 balloons.

HOSPITAL

DENTAL

LABORATORY

DRYING AND STORAGE CABINETS

CSSD

RETIREMENT HOMES

STAINLESS STEEL FURNITURE



**AT-OS SRL**

Viale del Lavoro, 19- 37030 Colognola ai Colli

Verona- ITALY

Tel (+39) 045 6159411- Fax (+39) 045 6159422

info@at-os.com | www.at-os.com

